

Customer-First

Worldwide Service & Spare Parts Supply

Ship Crane & Lifeboat Davit

Life Saving Appliances

Lifting Appliances
(Marine Cranes)

Deck Machineries

Engine room Cranes

Personnel Transfer System



*A companion
that our customers can trust;
Oriental Inspection & Service will always
accompany you on the way.*

A companion that our customers can trust;

**Oriental Inspection & Service will always
accompany you on the way.**

We are always grateful your support for Oriental Inspection & Service Co., Ltd.


Oriental Inspection & Service's main work is providing maintenance, after-sales service, regular inspections, education services and spare parts and parts for LSA products produced and supplied by Oriental Precision & Engineering Co., Ltd.

Driven by our principle to see from the customer's view and our capacity resulting from constant research for LSA expertise, we have managed to grow into a company that is viewed highly by the customers.

In response to all the support that we receive, we promise to work even more swiftly to ensure that our customers are not faced with inconveniences and become a company that does not betray the trust it's given.

Wishing for your success at all times, we will present satisfaction to all our customers who walk with Oriental Inspection & Service.

C.E.O Park Se-Chul

A handwritten signature in black ink, consisting of stylized Korean characters.

Spare parts

We sell parts of all products
produced by the Oriental Precision & Engineering.

Oriental Inspection & Service sells parts and spare parts of all products produced by the parent company Oriental Precision & Engineering.

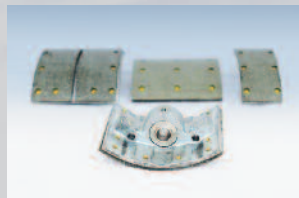


We sell only authentic products that have been verified by Oriental Precision & Engineering.

Feel free to make any inquiries on Oriental Precision & Engineering products for your transport ships and we will respond swiftly through a specialized system with the most reasonable offers.



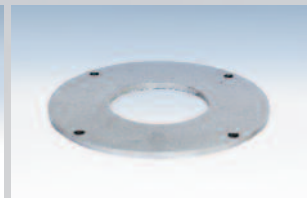
GOVERNOR BRAKE



GOVERNOR SHOE



INNER DISK



OUTER DISK



CAM CLUTCH



LIMIT SWITCH



SHEAVE



NON SCREW BLOCK & LINK



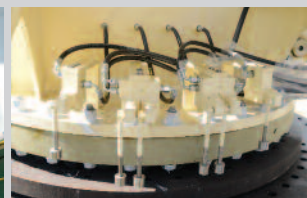
HYDRAULIC HOSE



CONTROL VALVE



HYDRAULIC CYLINDER



SLEWING LIMIT VALVE



REDUCER



HYDRAULIC MOTOR



HOOK BLOCK



SLEWING BEARING

After-sales service

The whole staff give their best to provide active and **Effective services for maximum customer satisfaction.**



AFTER-SALES SERVICE OVERVIEW

Oriental Inspection & Service possesses a thorough quality-guarantee system for after-sales service and the whole staff give their best to provide active and effective services for maximum customer satisfaction.

AFTER-SALES SERVICE POLICY

We handle our work efficiently and swiftly and give our best to provide services that satisfy our customers. We are not limited to simply solving claims that arise within the period of guarantee, but we provide information that our customers need until the final application of our equipments and we also sincerely respond to various requests for support.

Furthermore, we provide active and effective services for the best customer satisfaction, including a realtime management of the procedure of processing/managing claims for defects that arise during the period of guarantee and a realtime communication with our customers.

Repair and maintenance Oriental Life boat Davit & Winches and Life Saving equipments by authorized and trained service technicians. Who are available worldwide to assist for repair and maintenance. Including Ship Crane Lifting appliances.



Certificate education

Education for Oriental

LIFE SAVING APPLIANCE Certification

Oriental Inspection & Service's certification education is

for the execution of the annual and 5-yearly inspections of the Oriental Precision & Engineering-produced life boat davits/winches, life raft davits, free fall davits and rescue boat davits with MSC 1206 for Life saving appliance as the theme. The education is conducted in each quarter of the year and is subject to change.

Employees of domestic and foreign maintenance companies who attend our education course will receive Oriental Precision & Engineering-issued ID card and certificate that verifies their qualifications for davit inspections, and these can be used to verify inspector qualifications for the ship owner or the ship officer in future inspections.

Only the inspectors who have completed our education course can function on our homepage, and the requirements of the applicants of the education will be decided by our company.



Certificate of authenticity

Introduction to certificate of authenticity for davit inspections.

After the completion of our education course, when the qualified engineers of each country inspect / repair Oriental Precision & Engineering's life boat davits, certificate of authenticity will be issued to each engineer.



Life saving appliances must guarantee the utmost safety in all emergency situations, and to prepare for this, the service of qualified engineers is necessary.

In the case that you receive services from engineers who have not received our certificate, our company will not be liable for any safety issues of our life boat davits.

On our homepage, we provide recommendations of qualified engineers in different countries, and through this service, you can receive the best service of our company.

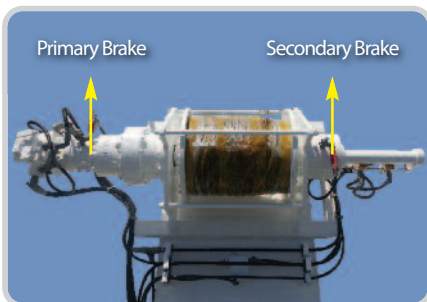
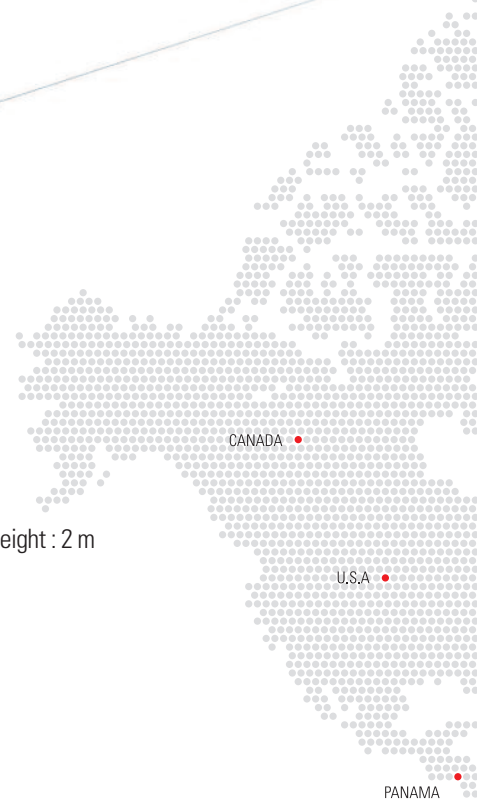
Personnel Transfer System

by the use of Crane

ORIENTAL shipboard and offshore jib cranes used for the occasional transfer of personnel between ship to ship or rig to ship or for maintenance work are designed / certified according to rules of each classification society.

- Available for new vessel as well as seagoing vessels.
- Available for monorail crane and overhead crane.

Personnel handling operations are to only be performed using basket or carriers specially designed / certified for this purpose.



Personnel Winch

The operation limitation is

- Mean wind velocity : 10 m/s - Significant wave height : 2 m
- Visibility : daylight or equivalent

Key components are

- Personnel winch combined with cargo
- Secondary brake system Mode selection device
- Warning light



Personnel Basket

ORIENTAL Personnel Basket is designed certified according to EN14502-1, 2010 and rules of each classification society.

- Safety working load : 1,000 kg (5 persons, incl. basket)
- Dead weight : 365 kg
- Design temperature : - 10 deg.
- Max. sling angle : 30 deg
- Number of sling legs : 4

After Sales Service Network

Customer-First Worldwide Service & Spare Parts Supply

The new IMO regulation MSC Circ. 1206 has been into the force since July 1st, 2006 it says that service personnel who was trained and authorized can carry out life boat Davit & Winches maintenance repair and inspection except routine maintenance.

We have been made every effort to minimize customers inconvenience caused by the regulation and to offer best service

As the result, we have built service network with 180 service station in 90 countries, more than 350 service engineers and certified all over the word.





With a great dream towards a brighter future And for your success the journey continues



INSPECTION & SERVICE CO., LTD.

8, Noksansandan 381-ro, Gangseo-gu, Busan, Korea

Tel. +82-51-831-2747 Fax. +82-51-831-6260

E-mail : opcois@opco.co.kr / web site : www.opcois.com